



## Foster Road, London, W4 4NY

A charming one-bedroom ground floor garden flat located in the heart of Chiswick, a short walk from Chiswick High Road and Turnham Green station. This very well presented flat comprises a spacious reception room with doors leading directly on to a shared garden, integrated kitchen, one double bedroom with good storage, tiled shower room, hallway utility space, gas fired central heating and on street parking via Council permit. The property benefits from generous ceiling heights and with a total internal area 354 sq. ft, making it ideal for a professional tenant seeking a home in a vibrant and well-connected location. Located on a quiet residential street, Foster Road offers easy access to the shops, cafes, and restaurants of Chiswick, as well as the excellent transport links of Turnham Green & Chiswick Park tube stations, numerous local bus routes with convenient access via M4/A4/A40 to Central London, Heathrow and the West. Hounslow Council Band C. EPC.C. The property is offered as furnished and available now.

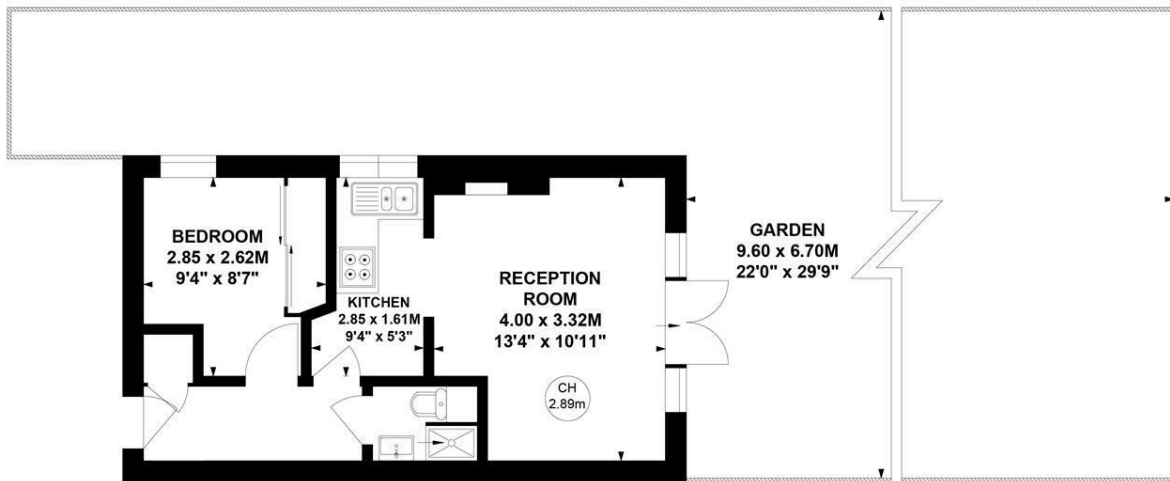
- A very well presented one bedroom garden flat
- Only flat with direct access on to the shared garden
- Quiet residential street
- Short walk to Chiswick High Road
- High ceilings throughout
- EPC C
- On street parking via Council Permit
- Hounslow Council Band C
- Furnished
- Available now

**£1,750 Per Calendar Month**

# Foster Road, W4

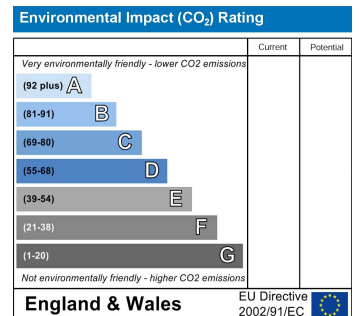
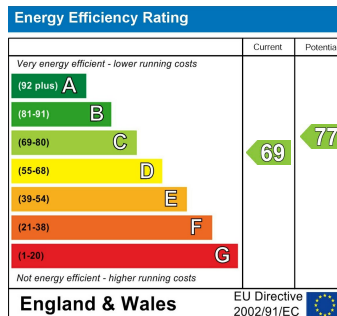
Approximate gross internal area  
30.40 sq m / 327 sq ft

Key :  
CH - Ceiling Height



**Ground Floor**

Not to scale, for guidance only and must not be relied upon as a statement of fact.  
All measurements and areas are approximate only



5-7 Turnham Green Terrace, Chiswick, London, W4 1RG  
Tel 020 8747 8800

PrimeLocation.com Zoopla.co.uk rightmove OnTheMarket.com

E-mail [lettings@whitmanandco.com](mailto:lettings@whitmanandco.com)  
Website [www.whitmanandco.com](http://www.whitmanandco.com)

MISREPRESENTATION ACT 1967

Whitman & Co. for themselves and for the vendors give notice that these particulars do not constitute any part of, an offer of contract. All statements contained in these particulars are made without responsibility on the part of Whitman & Co. or the vendor. None of the statements contained in these particulars is to be relied upon as statements or representations of facts. Any intending purchaser must satisfy himself by inspection or otherwise as to the correctness of each of the statements contained in these particulars. The vendor does not make or give, and neither Whitman & Co. or any person in their employment has any authority to make or give, any representation or warranty whatever in relation to the property.